

**SRGDP-TL means Semi-Rigid-Galvanized-Double Wall with a thermo-laminated membrane.** FLIXS is a uninsulated semi-rigid galvanized steel ventilation duct designed to be used in structural concrete slabs. This patent-pending product has a thermolaminated polymer membrane on its exterior surface to eliminate contact between steel and concrete thereby eliminating the development of corrosion.

**SRGDP-TL** is manufactured from a double strip of galvanized steel 0.005" longitudinally profiled. The outer strip is contoured and allows the flexible structure of the duct to be created. The inner membrane creates a perfectly smooth surface and is simultaneously assembled into complex 7 facet joints. This seven-facet joint provides a perfect seal at the operating pressure shown in the table below while eliminating water leaks generated by condensation.

- The interior surface of the SRGDP-TL is smoother than all ducts on the market.
- The duct does not deform and thus keeps the circular surface even when it is bent at 90 degrees, limiting static loss.
- No screws are required, eliminating debris buildup.
- Sloping installation is possible allowing the elimination of condensation.
- Conduit manufactured in one length without seal eliminating any possibility of water leakage.
- Thermolaminated polymer membrane

**SRGDP-TL** is easily foldable allowing 90-degree elbows to be formed. This product has a high seal and makes it possible to adapt to all types of systems both in terms of temperatures in heating mode and those in cooling mode.

**SRGDP-TL** is very robust and resists without warping when installed in a concrete slab.

**Bending diameter:** 1.5 - 2 times the diameter of the duct

**Galvanized steel:** 3" - 4" - 5"

**Maximum length of 50 "**or custom accepted.

<b>Materials available</b>	Galvanized steel
<b>Inner diameter</b>	4.000 in
<b>Outer diameter</b>	4.294 in
<b>Flame spread*</b>	<0
<b>Fume development*</b>	<0
<b>Maximum air velocity</b>	4000 ft/min
<b>Positive operating pressure in continuous mode</b>	15" of WC
<b>Negative operating pressure in continuous mode</b>	15" of WC
<b>Operating temperature amplitude</b>	-60° to 75° Celsius
<b>Duct wall thickness</b>	0.01" (0.26mm)

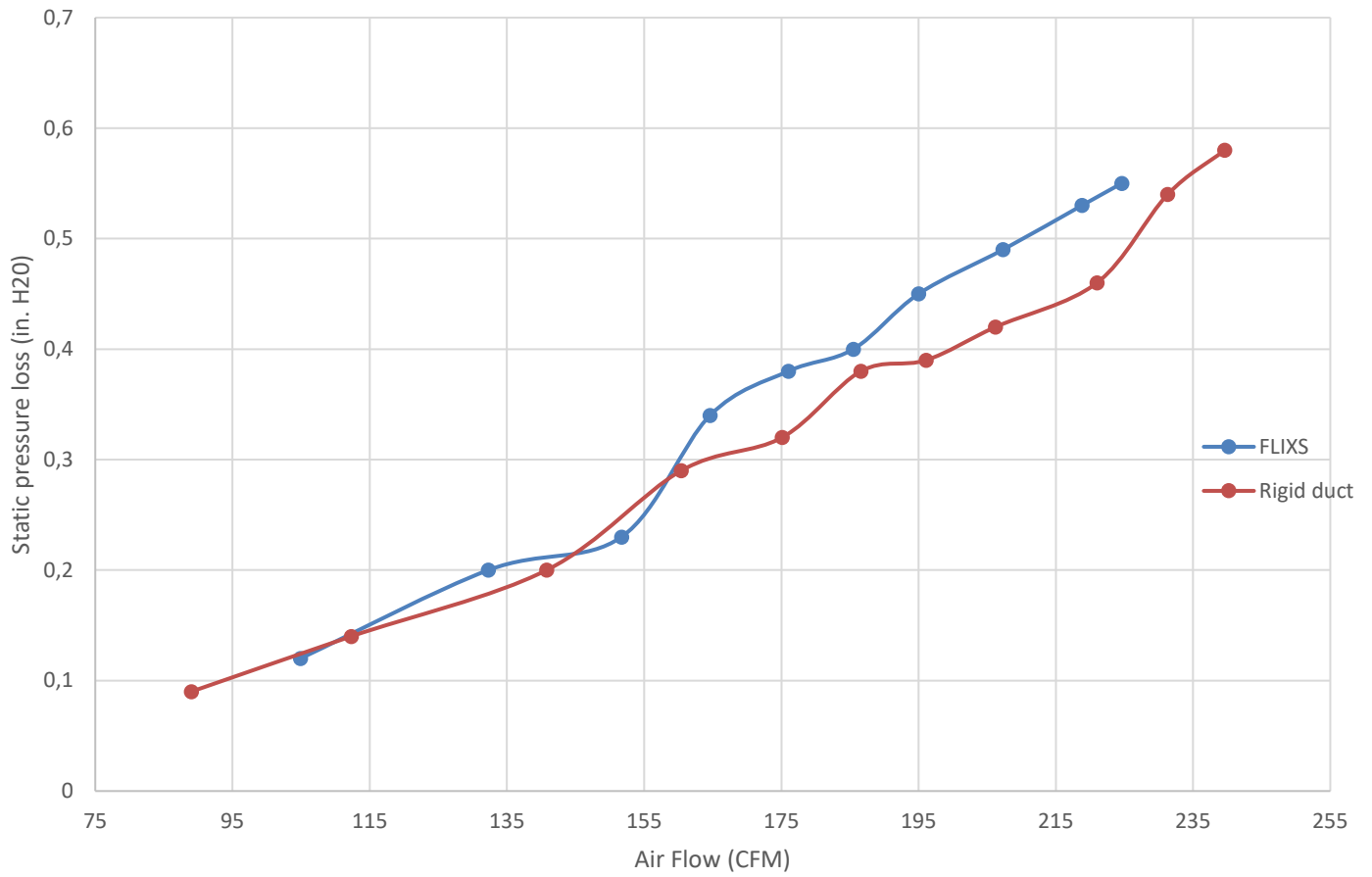


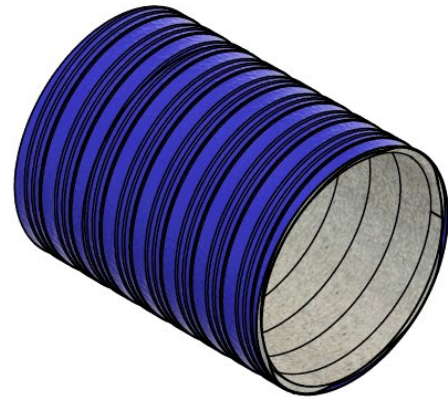
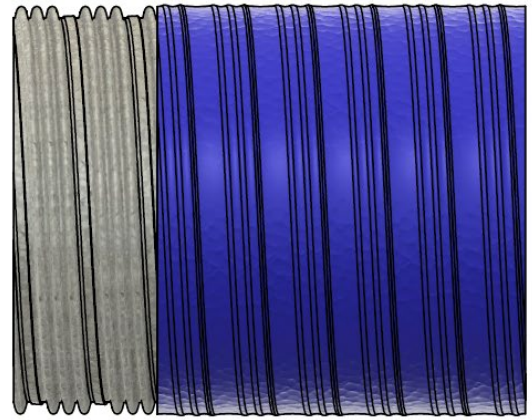
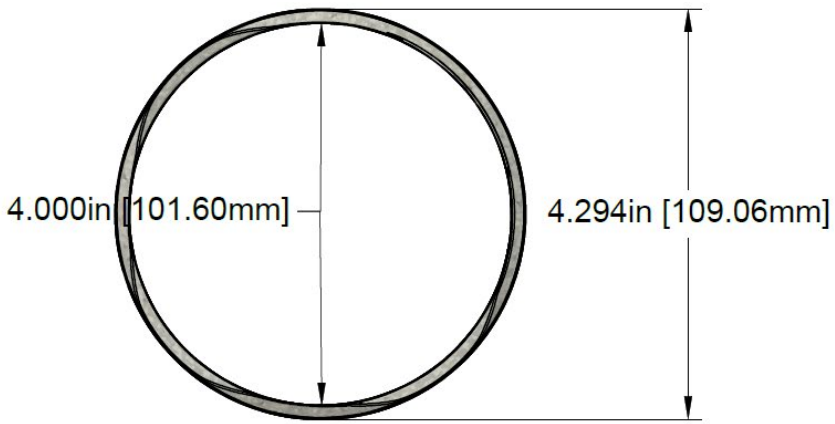
This product meets the standards\*  
C-UL-S-114

\*When the duct is buried in a standard concrete slab

### FLIXS VS Rigid Duct:

Comparison of the loss of static pressure as a function of the flow rate of a 30 foot ventilation circuit comprising 3 elbows





Notes:  
Inner diameter: 4.000in [101.60 mm]  
Outer diameter: 4.294in [109.06 mm]